

Thanksgiving Point Golf Club

	Approx. Square Footage	Dimensions	Reception	Banquet	Theater	Classroom	Crescent	U-Shaped	Restaurant & other capacity
Outdoor Grounds	2,200	55' x 40'	150	128	200	-	-	-	
Banquet Great Room	4,400	88'1"x50'4"	144	200	425	160	150	50	25 booth tables
Foyer Great Room	1,250	34'2"x37'10"	50						
Brides/Staging room	130	13'2"x10'2"							6ppl
Board Room	391	23'3"x17'5"							Table 16 ppl
Restaurant	1,015	29'x35'13'							50
Upstairs Balcony			40	24					
1st level Balcony			40	24					

On-Site Meeting Equipment & Services:

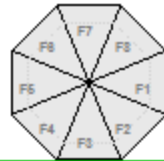
- Podium
- Full sound system
- Cordless/corded microphones
- LCD Projector & Screen
- 36" Round Tables
- 54" Round Tables
- 6' Banquet and Classroom tables
- Linens - white or black
- Catering onsite or option for outside catering with approval
- Bar Table Set-Up

Additional Equipment & Services Available through External Vendors

- Photography
- Specialty Linen/Linens in other colors
- Florist
- DJ or bands
- Other Audio Video
- Vendor table covers and skirting
- Lavalier Microphone

Thanksgiving Point Golf Club

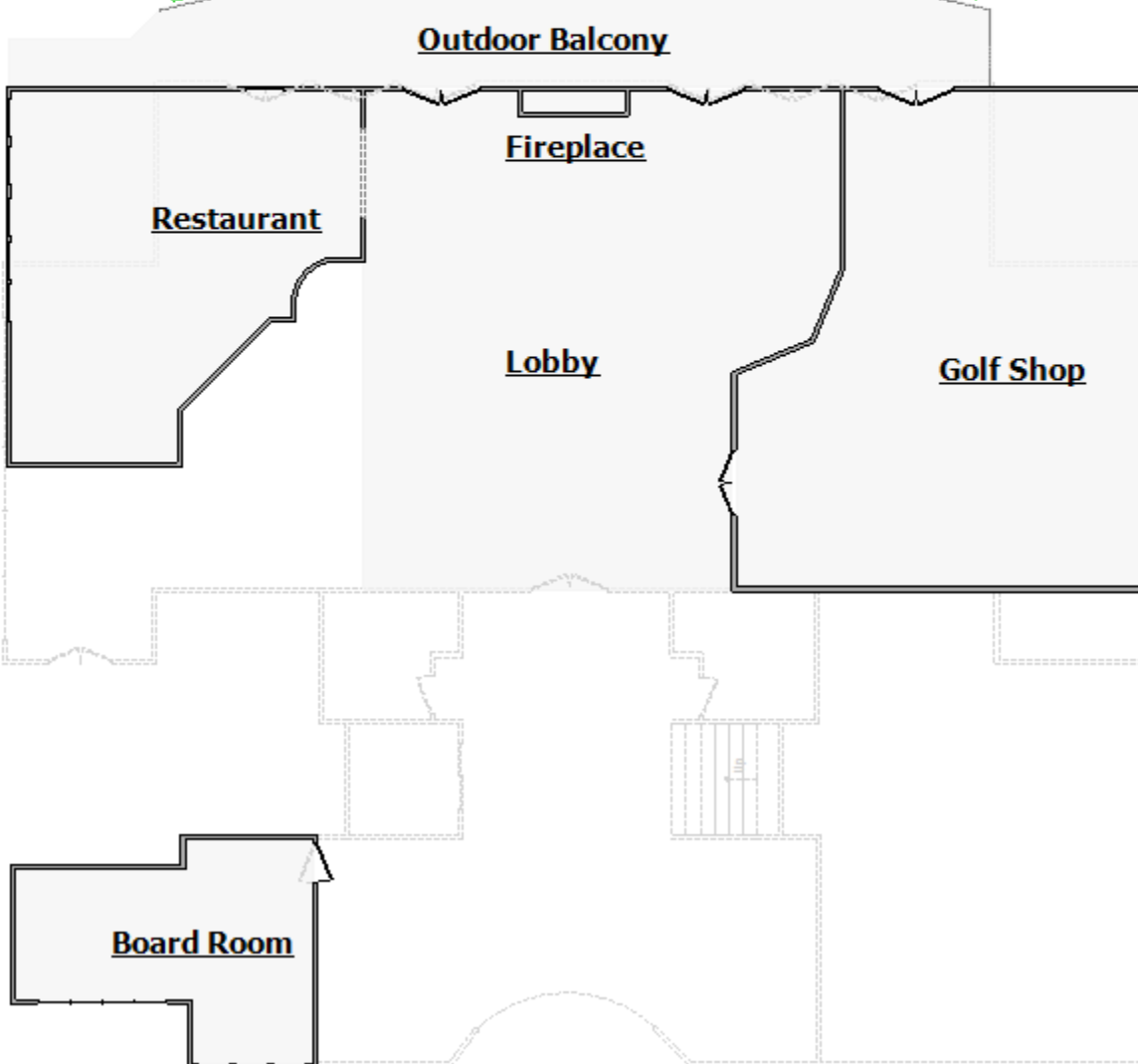
1st Floor



Gazebo



Outdoor Venue Event Area



Outdoor Balcony

Fireplace

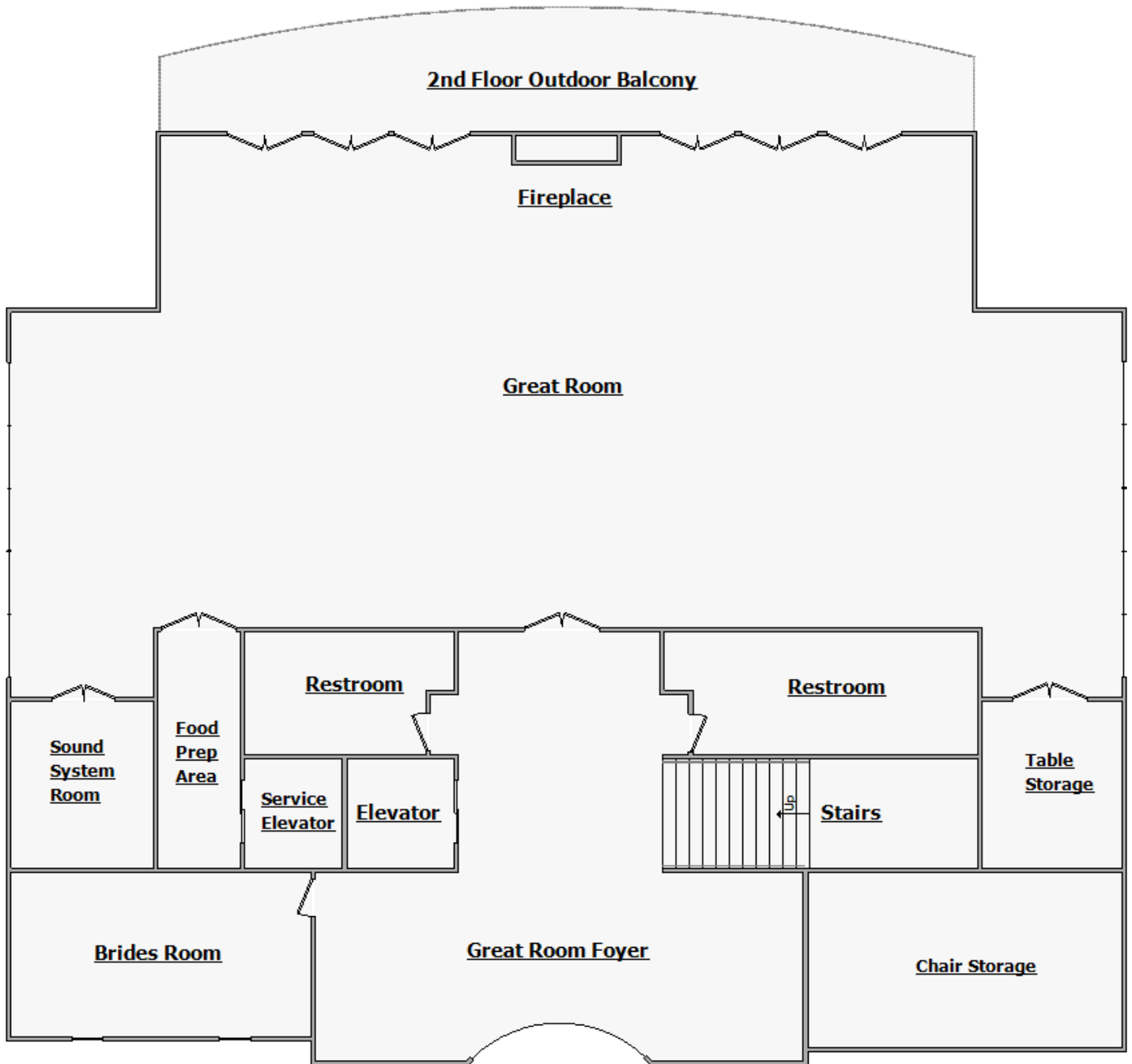
Restaurant

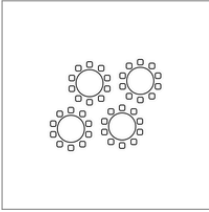
Lobby

Golf Shop

Board Room

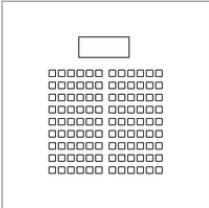
2nd Floor





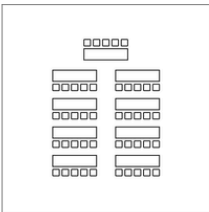
BANQUET

Generally used for meals and sessions involving small group discussions. A five foot round table seats eight people comfortably. A six foot round table seats 10 people comfortably.



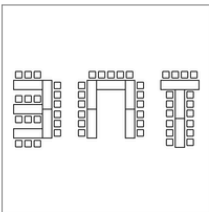
THEATER

Appropriate for large sessions and short lectures that do not require extensive note-taking. This is a convenient setup to use before breaking into discussion or role-playing groups because chairs can be moved.



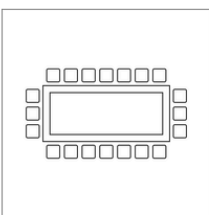
SCHOOLROOM OR CLASSROOM

The most desirable setup for medium to large-size lectures. Requires a relatively large room. Tables provide attendees with space for spreading out materials and taking notes.



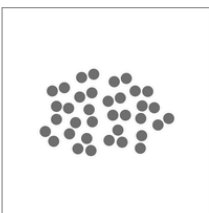
E-SHAPE, U-SHAPE AND T-SHAPE

Appropriate for groups of fewer than 40 people. These are best for interaction with a leader seated at the head of the setup. Audiovisual is usually best set up at the open end of the seating.



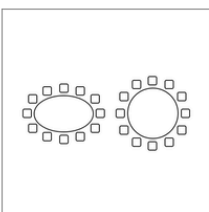
CONFERENCE AND HOLLOW SQUARE

Appropriate for interactive discussions and note-taking sessions for fewer than 25 people. Many hotels have elegant "boardrooms" for 10 to 20 people, equipped with full audiovisual capabilities, a writing board, cork board and a flip chart.



RECEPTION

Stand-up social function where beverages and light foods are served. Foods may be presented on small buffet tables or passed by servers. May precede a meal function.



OVALS AND ROUNDS

Generally used for meals and sessions involving small group discussions. A five foot round table seats eight people comfortably. A six foot round table seats 10 people comfortably.